



**Laerdal**  
helping save lives

**implox** Pty.  
Ltd.  
HEALTHCARE



## Preparing for Sudden Cardiac Arrest

### AED Trainer 3

The AED trainer 3 is the ultimate preparation tool for trained responders facing cardiac arrest.

# AED Trainer 3

A fast, accurate response from trained responders when treating the cardiac arrest patient is essential if successful patient outcomes are to be achieved.

## Looks and works like a Heartstart FR3

The AED Trainer 3 reflects the unique functionality of the Philips Heartstart FR3 AED, and provides a realistic training experience for emergency responders to deliver optimal therapy when facing cardiac arrest.

No actual defibrillation shocks are delivered by the device assuring safety throughout each training session.

## Flexible Configuration

The AED Trainer 3 is configured with eight real-world scenarios that have been developed in accordance with internationally recognised responder programmes. They are AHA and ERC 2010 Guideline compliant. Many parameters on each scenario can be easily configured to conform to local protocols or future Guideline updates. Language voice prompts can also be changed at a touch of a button.

## Complete Instructor Control

The instructor can change scenarios by pressing the buttons on the device itself or by using an optional remote control. During each scenario, the remote control lets the instructor pause, change or introduce new challenges, to test how students respond to a variety of situations, enhancing the learning experience.



### Practise Fast Delivery of Therapy

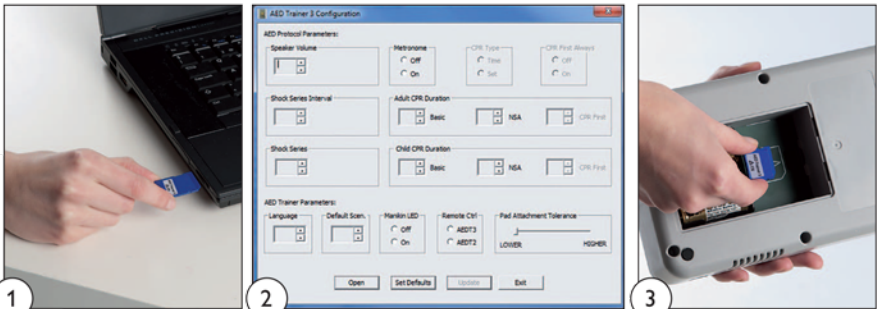
The 'auto-on' carry case and pre-connected training pads\* enables students to practise fast delivery of therapy just like on the Heartstart FR3.

### Laerdal LINK technology enabled

Indicates correct/incorrect placement of pads via LED's on Laerdal LINK enabled manikins.



### Simple to Configure



1 Insert the Operating System Card into a PC

2 Change the parameters

3 Return to AED Trainer 3

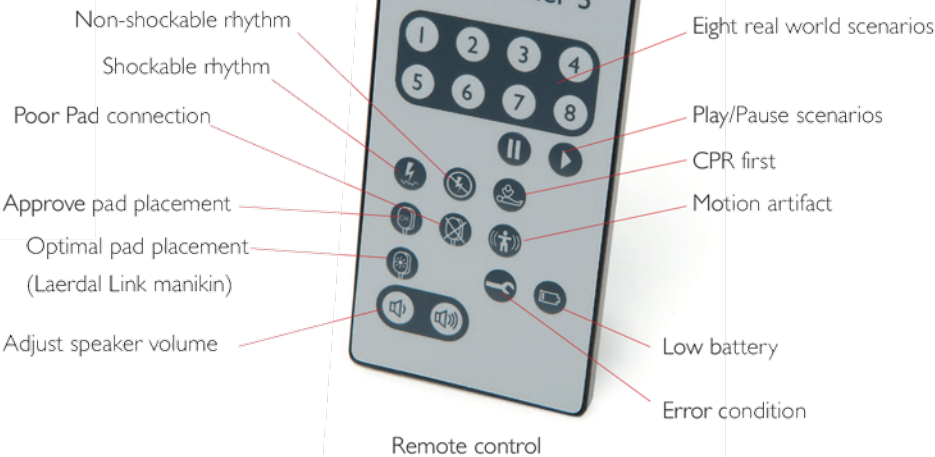
Visit <http://www.laerdal.com/downloads> for multilanguage DFU, latest localizations and configuration software



Infant/child key

### Infant/child Mode









The infant / child key removes the need to modify settings and facilitates the practice of prompt paediatric defibrillation on infants or children <8 years.



Remote control



AED Trainer 3 scenarios:

Scenario	Symbol	Description
1	 One shock for conversion	<ul style="list-style-type: none"> <li>Shockable rhythm</li> <li>One shock needed for conversion</li> <li>Non-shockable rhythm</li> </ul>
2	 One shock for conversion	<ul style="list-style-type: none"> <li>Non-shockable rhythm</li> <li>Shockable rhythm</li> <li>One shock needed for conversion</li> <li>Non-shockable rhythm</li> </ul>
3	 Troubleshooting pads, one shock for conversion	<ul style="list-style-type: none"> <li>Poor pads contact</li> <li>Shockable rhythm</li> <li>One shock needed for conversion</li> <li>Non-shockable rhythm</li> </ul>
4	 Refrillation after conversion	<ul style="list-style-type: none"> <li>Shockable rhythm</li> <li>One shock needed for conversion</li> <li>Non-shockable rhythm</li> <li>Return to shockable rhythm after three minutes</li> <li>One shock needed for conversion</li> <li>Non-shockable rhythm</li> </ul>
5	 Non-shockable rhythm	<ul style="list-style-type: none"> <li>Non-shockable rhythm throughout</li> </ul>
6	 Two shocks for conversion	<ul style="list-style-type: none"> <li>Shockable rhythm</li> <li>Two shocks needed for conversion</li> <li>Non-shockable rhythm</li> </ul>
7	 CPR first, one shock for conversion	<ul style="list-style-type: none"> <li>Shockable rhythm</li> <li>CPR First</li> <li>Shockable rhythm</li> <li>One shock needed for conversion</li> <li>Non-shockable rhythm</li> </ul>
8	 Shockable rhythm	<ul style="list-style-type: none"> <li>Shockable rhythm throughout</li> </ul>

\*The AED Trainer 3 can be used with HeartStart Training Pads III or Laerdal Link Pads.

### ORDERING INFORMATION

Part No.	Description
198-00150	AED Trainer 3, DFU, Quick Start Guide, 4 x AA Batteries, Infant/Child Key with tether, Carry Case, Operating System Card, Philips Training Pads III, Philips Interconnect cable, External Manikin Adapter.

### Consumables

Part No.	Description
989803150181	Heartstart Training Pads III
989803150201	Heartstart Training Pads III
	Interconnect Cable
945090	Laerdal LINK Training Pads

### Accessories

Part No.	Description
198-00350	Remote control (with CR2025 3V battery)
198-10050	Hard Carry Case
198-10250	1GB Operating System Card w/software
M5089A	External manikin Adapters ( 5 pack)



**Laerdal**  
helping save lives

**implox<sup>Pty. Ltd.</sup>**  
HEALTHCARE

**Units 22-24**  
**60-66 Richmond Road,**  
**Keswick 5035, South Australia**  
**Telephone: 8351 1455**  
**Facsimile: 8293 7377**  
**Email: CustomerService@implox.com**  
**www.implox.com**