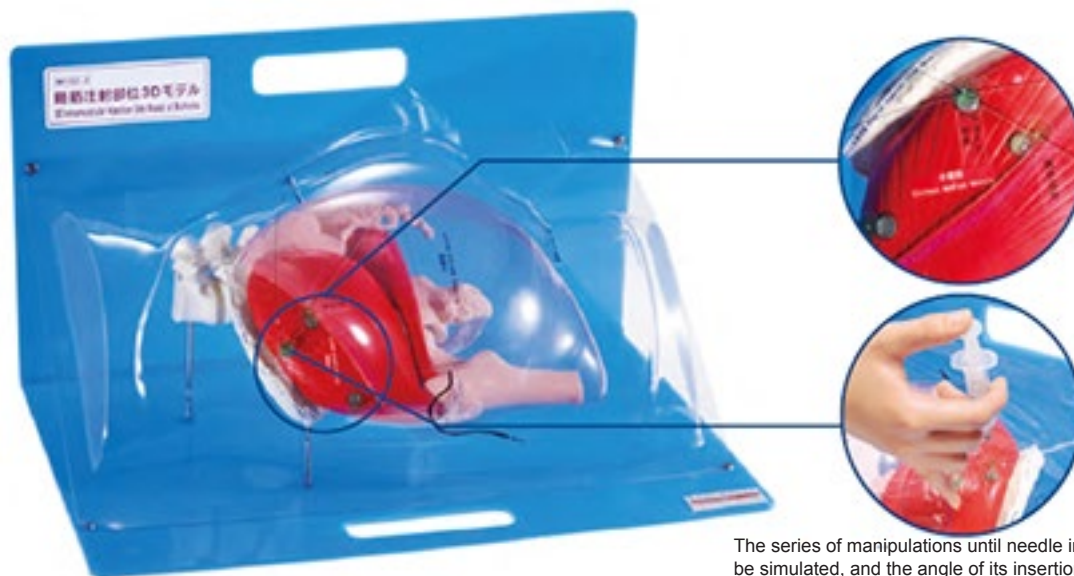


# Sakamoto Gluteal Injection Site Model 3D

**implox** Pty.  
Ltd.  
HEALTHCARE



The series of manipulations until needle insertion can be simulated, and the angle of its insertion into the gluteus medius muscle can be learned.  
(Caution) Liquid can't be injected into the model.  
An injection needle can be inserted.

A 3D simulator to facilitate identification of correct intramuscular injection sites.

Allows for site identification through visulisation and palpation.



Hochstetter's Point



Clarke's Point



Shibusanbu Method  
(Upper Outer Quadrant of the Buttocks)

**implox** Pty.  
Ltd.  
HEALTHCARE

**Units 22-24**

**60-66 Richmond Road,  
Keswick 5035, South Australia**

**Telephone: 8351 1455**

**Facsimile: 8293 7377**

**Email: [CustomerService@implox.com](mailto:CustomerService@implox.com)**

**[www.implox.com.au](http://www.implox.com.au)**

Part Number  
IMPM152-2

Description  
Sakamoto Gluteam Injection Site Model 3D